



4K BULLET B1201-0803F AI-BASED CAMERA



UHD 3840 x 2160 30FPS



OPTIMIZED IR WITH 50M (164FT) RANGE



-40°C - 60°C (-40°F - 140°F)

B1201-0803F UHD 3840 x 2160 video with 3x optical zoom.

B1201-0803F Network Camera is an all-integrated camera delivering UHD 3840 x 2160 resolution and 3x optical zoom for easy and flexible installation at any distance as well as detailed video for identification. With a wide temperature range, impact resistance and IP66, IK10, this reliable camera is ready for tough environments. Lightfinder, Optimized IR with 50m (164ft) range ensure details in challenging light conditions and darkness. B1201-0803F offers built-in analytics for proactive surveillance, corridor format and audio in for video with sound.



GENERAL

Casing	IP66, IK10
Color / Material	Top : White / Aluminum Bottom : White / Aluminum Sun-Shield : White / Aluminum
Operation Temperature / Humidity	-40°C - 60°C (-40°F - 140°F); 10 - 100%RH
Dimensions	L340 x W157 x H130mm
Weight	3.35kg
Memory	4GB RAM, 64GB FLASH
IR Illumination	Optimized IR with power-efficient, long-life 850nm IR LED's with adjustable angle of illumination and intensity. Range of reach up to 50m (164ft) or more depending on the scene
Wiper & Heater	Support heater
Micro SD Card	External, up to 256G
Power	Power PoE (IEEE802.3at/af) Power consumption PoE: Max 16W (no Heater) PoE: Max 27.5W (with Heater)
GPS	Not support
Wi-Fi	Not support

CAMERA

Application	Outdoor/Indoor Security, Class/Office Attendance, Smart parking, Safty Alert, Violation Law Alert, Traffic
Processor	Qualcomm QCS605 Qualcomm® Kryo™ 300 CPU, Octa-core 64-bit 2.5GHz 10nm Qualcomm® Adreno™ 615 GPU Qualcomm® Hexagon™ 685 DSP
Image Sensor	1/1.8" CMOS, Sony IMX334
Electronic Shutter Speed	Minimum / Maximum: 1/100 - 1/25000s Anti Banding
Automatic Day/Night	Support
Minimum Illumination	Color: 0.005Lux, IR: 0.001Lux F1.7

LENS

Optical Zoom	3x
Digital zoom	2x
Focal Length	10.9 - 29mm
FOV (Horizontal, Vertical)	H: 42°(W) - 15°(T) V: 22.8°(W) - 8.4°(T) D: 48.7°(W) - 17.1°(T)
Min. Object Distance	Wide: 2.5m - ∞, Tele: 6m - ∞
Auto IRIS	F1.7 ± 5%
Auto Focus	Support



EDGE-AI FEATURES

AI Features	Face Mask Detection
	Face recognition
	Human Detection
	Intelligence Transport System
	Fire Detection
	Social Distancing
Tamper Detection	Not support

VIDEO

Resolution	UHD 3840 × 2160
Frame Rate	60fps
Video Compression	H.264, H.265
Streaming	Allow upto twenty (20) simultaneous multi-streams using H.265, H.264

IMAGE

Night Vision Technology	Support
Digital Noise Reduction	Qualcomm ANR
Gain Control	Low / Middle / High
White Balance	Incandescent / Fluorescent / Auto / Daylight / Cloudy
Video Rotation	Mirror, Rotate
Bitrate Control	H.265/H.264: CBR

AUDIO

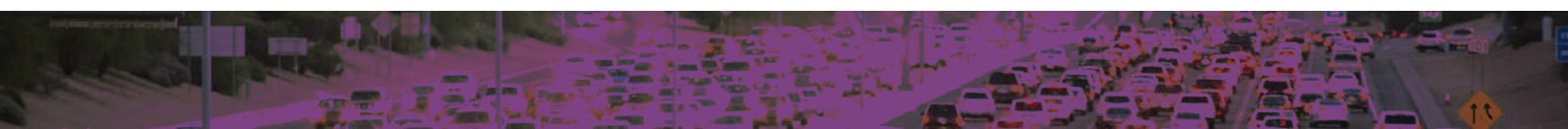
Audio In	Selectable (mic in/line in) Supply 1.8V, 3mA output current, Impedance detection: 4 - 70kΩ
Audio Out	Lineout: - 30.8mW (typical) with 32Ω - 61.6mW (typical) with 16Ω
Audio Compression	Playback: WAV maximum 24-bit, 192kHz Stream audio: AAC 16-bit, 48kHz

PTZ

Pan/Tilt/Zoom	Not support
PT Speed	Not support

NETWORK CONNECTIVITY

Interface	RJ-45 cable connector for Network 10/100/1000Mbps
Protocol	IPv4, IPv6, TCP/IP, UDP/IP, RTSP, HTTP, HTTPS, SSI/TLS, DHCP
Web Viewer	Supported OS: Windows 7, 8.1, 10, Mac OS X 10.10, 10.11, 10.12 Recommended Browser: Google Chrome Supported Browser: MS Explore11, MS Edge, Mozilla Firefox (Window 64bit only), Apple Safari (Mac OS X only)
Security	Password Protection, HTTPS encryption, digest authentication, WS authentication, user access log, 802.1x port based authentication



SYSTEM INTEGRATION

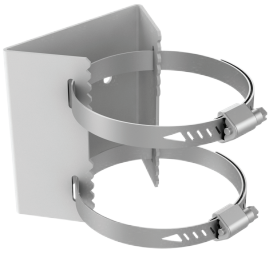
Application Programming Interface ONVIF Profile S/G/T

Analytics Directional detection, Face detection, Motion detection, Enter/Exit, Traffic, ANPR

Alarm Triggers Network disconnect

Alarm Events FTP, Email, Server VA, Sound Alarm output

ACCESSORY



E630-D8

Pole mount bracket

