



# 4K BULLET P200-0802N AI-BASED CAMERA



UHD 3840 x 2160 30FPS



OPTIMIZED IR WITH 30M (98FT) RANGE



-40°C - 50°C (-40°F - 122°F)

P200-0802N UHD 3840 x 2160.

P200-0802N Network Camera is an all-integrated camera delivering UHD 3840 x 2160 resolution and for easy and flexible installation at any distance as well as detailed video for identification. With a wide temperature range, impact resistance and IP66, IK10, this reliable camera is ready for tough environments. P200-0802N offers built-in analytics for proactive surveillance, corridor format and audio in for video with sound.



## GENERAL

Casing	IP66, IK10
Color / Material	Top : White / Aluminum Bottom : White / Aluminum
Operation Temperature / Humidity	-40°C - 50°C (-40°F - 122°F); 10 - 100%
Dimensions	L306 x W89 x H99mm
Weight	1.25kg
Memory	4GB RAM, 64GB FLASH
IR Illumination	Optimized IR with power-efficient, long-life 850nm IR LED's with adjustable angle of illumination and intensity. Range of reach up to 30m (98ft) or more depending on the scene
Wiper & Heater	Not support
Mirco SD Card	External, up to 256G
Power	Power: DC12V 10%/ PoE (IEEE802.3at) Power consumption DC12V: Max 15W PoE: Max 16.5W
GPS	Not support
Wi-Fi	Not support

## CAMERA

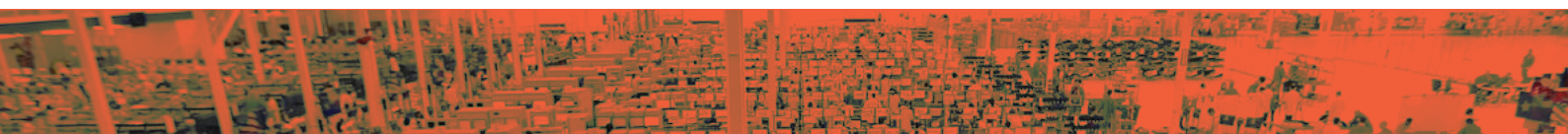
Application	Supervision Office, Mall, School, Smart Parking, Outdoor/Indoor, Wide-angle Monitoring, Traffic Monitoring...
Processor	Qualcomm QCS605 Qualcomm® Kryo™ 300 CPU, Octa-core 64-bit 2.5GHz 10nm Qualcomm® Adreno™ 615 GPU Qualcomm® Hexagon™ 685 DSP
Image Sensor	1/1.8" CMOS, Sony IMX334
Electronic Shutter Speed	Minimum / Maximum: 1/100 - 1/25000s Anti Banding
Automatic Day/Night	Support
Minimum Illumination	Color: 0.005Lux, IR: 0.001Lux F1.7

## LENS

Optical Zoom	2x
Digital zoom	8x
Focal Length	4.36 - 9.33 mm
FOV (Horizontal, Vertical)	H: 111.96°(W) - 47.23°(T) V: 58.11°(W) - 26.53°(T) D: 136.89°(W) - 54.16°(T)
Min. Object Distance	Wide: 1m - ∞, Tele: 2.5m - ∞
Auto IRIS	F1.36 - 2.0 ± 5%
Auto Focus	Support

## EDGE-AI FEATURES

AI Features	Face Mask Detection Face recognition Human Detection Intelligence Transport System Fire Detection Social Distancing
Tamper Detection	Not support



## VIDEO

Resolution	UHD 3840 × 2160
Frame Rate	30fps
Video Compression	H.264, H.265
Streaming	Allow upto twenty (20) simultaneous multi-streams using H.265, H.264

## AUDIO

Audio In	Selectable (mic in/line in) Supply 1.8V, 3mA output current, Impedance detection: 4 - 70kΩ
Audio Out	Lineout: - 30.8mW (typical) with 32Ω - 61.6mW (typical) with 16Ω
Audio Compression	Playback: WAV maximum 24-bit, 192kHz Stream audio: AAC 16-bit, 48kHz

## IMAGE

Night Vision Technology	Support
Digital Noise Reduction	Qualcomm ANR
Gain Control	Low / Middle / High
White Balance	Incandescent / Fluorescent / Auto / Daylight / Cloudy
Video Rotation	Mirror, Rotate
Bitrate Control	H.265/H.264: CBR

## PTZ

Pan/Tilt/Zoom	Not support
PT Speed	Not support

## NETWORK CONNECTIVITY

Interface	RJ-45 cable connector for Network 10/100/1000Mbps
Protocol	IPv4, IPv6, TCP/IP, UDP/IP, RTSP, HTTP, HTTPS, SSI/TLS, DHCP
Web Viewer	Supported OS: Windows 7, 8.1, 10, Mac OS X 10.10, 10.11, 10.12 Recommended Browser: Google Chrome Supported Browser: MS Explore11, MS Edge, Mozilla Firefox (Window 64bit only), Apple Safari (Mac OS X only)
Security	Password Protection, HTTPS encryption, digest authentication, WS authentication, user access log, 802.1x port based authentication

## SYSTEM INTEGRATION

Application Programming Interface	ONVIF Profile S/G/T
Analytics	Directional detection, Face detection, Motion detection, Enter/Exit, Traffic, ANPR
Alarm Triggers	Network disconnect
Alarm Events	FTP, Email, Server VA, Sound Alarm output

